

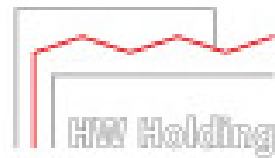


A developer's perspective on the potential
challenges within the Irish Solar Market

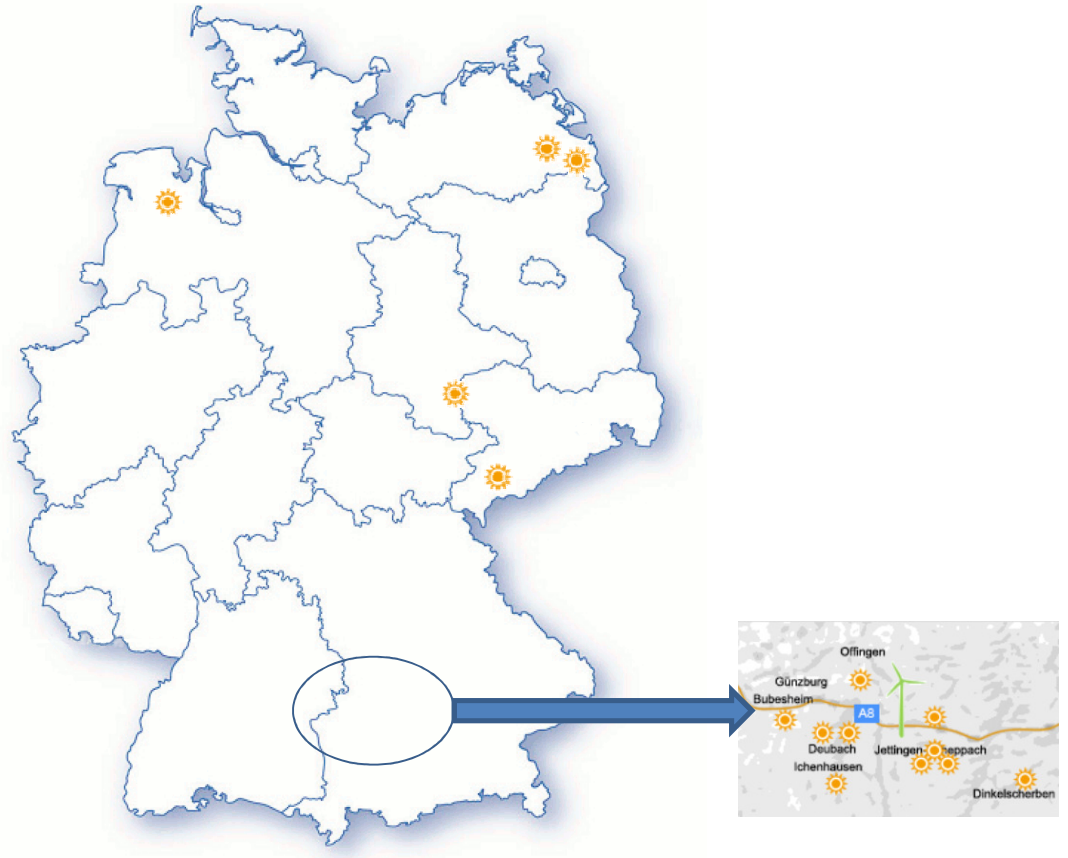
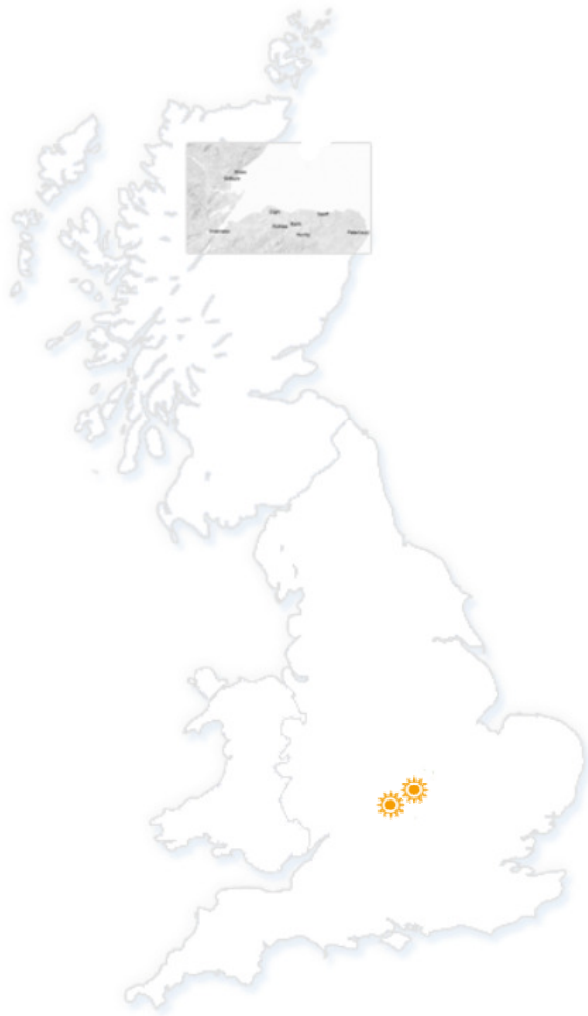


1. About vento ludens

The Horst Walz Group



1. About vento ludens



2. vento ludens in the Republic of Ireland



3. Opportunities and Challenges we face...

3.1. Planning Process

3.2. Communities

3.3. Grid Connection

3.4. Subsidy



3.1. Planning Process

- Lack of local solar project precedents, defined policies and guidelines
- Uncertainty of Local Authority approach to Application Assessment
 - *Will the content of the environmental screening differ locally?*
 - *What are the expectations regarding public participation process?*
 - *How will land value be dealt with?*
 - *What level of information is required for the grid connection (if any)? Can different options be included? What could ESB's involvement be?*
 - *Will dual land use with agricultural production be allowed?*
 - *Will an economic development section form part of an application?*
 - *Longevity of the planning process because of the right for a third party appeal?*
 - *Will the quality and depth of applications evolve over time?*
- Legacy of onshore wind
- Uncertainty of threshold for Local vs National Planning Process

3.2. Communities

- Legacy from wind
- Guidelines for planning participation
- Shared-Ownership and Shared-Benefit Schemes

"Improved Community Engagement will be essential to renewable energy policy making and implementation"

"Citizens and communities will be active participants in the energy transition, with robust public and stakeholder engagement in energy policy, and effective community consultation on energy infrastructure developments"

"developing a framework for how communities can share in the benefits of substantial new energy infrastructure which is located in their area"

"examining shared-ownership opportunities for renewable energy projects in local communities"

3.3. Grid Connection Policy



Commission for Energy Regulation
An Coimisiún um Rialáil Fuinnimh

Review of Connection and Grid Access Policy: Initial Thinking & Proposed Transitional Arrangements

DOCUMENT TYPE:	Consultation
REFERENCE:	CER/15/284
DATE PUBLISHED:	11 th December 2015
CLOSING DATE:	29 th January 2016
RESPONSES TO:	Electricityconnectionpolicy@cer.ie

The Commission for Energy
Regulation,
The Exchange,
Belgard Square North,
Tallaght,
Dublin 24.

www.cer.ie

- A new gate system
 - *breathe* with network needs and development
 - efficient process method
 - avoid capacity getting ‘stuck’
 - lower cost of shared connection

“extensive volume of non-GPA applications in 2015 have led to long lead times and cumulative impacts on the network due to volume and lack of geographic spreading which is not viable for the grid nor ESB to process these applications”

- Approach between now and Enduring Connection Policy



3.3. Grid Connection Policy

- Approach between now and Enduring Connection Policy

“In advance of new policy being put in place applications will continue to be processed under the existing non-GPA process – any applications still outstanding would then be processed under the new policy, where applicable.”

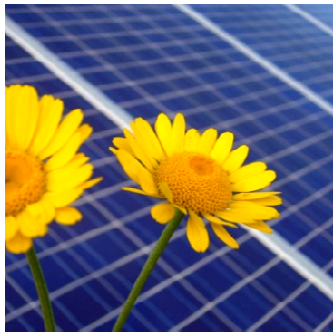
- Should we keep on applying in the non-GPA system for as long as possible?
 - Will projects order in the queue become a ‘criteria’ in the new gate system?
 - What if the pace of applications only increases or even stays the same, will the market be saturated (for the short term) before a new policy can get into force?
 - How can we assist ESB in this process?
- Available capacity for solar, now and in the future

3.4. Subsidy

- What course will the government take? Will this be different depending on the capacity of projects?
- What will be the impact of interconnectors in the longer term? How will the different markets interact?



— vento, ludens



29.01.16