



Energy in Ireland

2016 Report



Energy Trends 1990 – 2015

Overview

General trends



Progress towards renewable targets



Electricity generation



Sectoral trends



Summary



Energy-related Greenhouse Gas Emissions

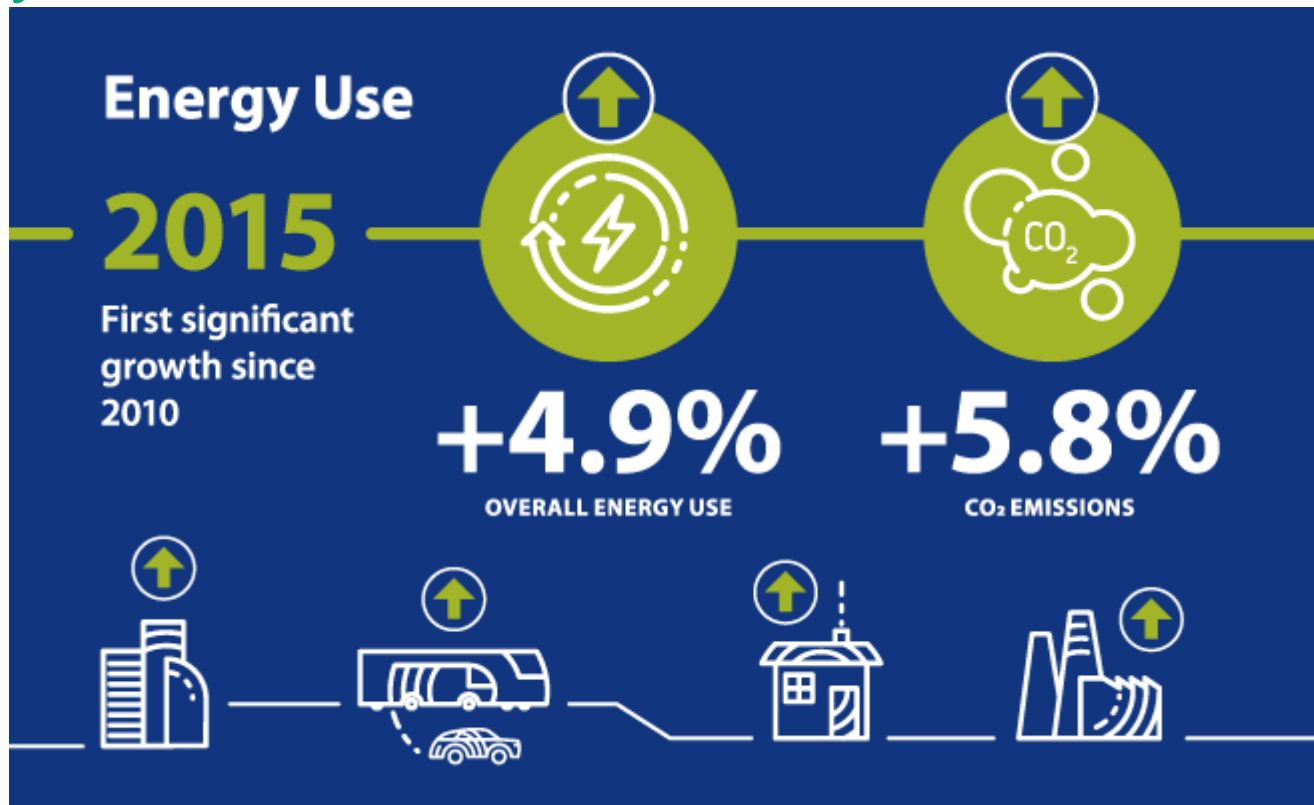


General Trends in 2015

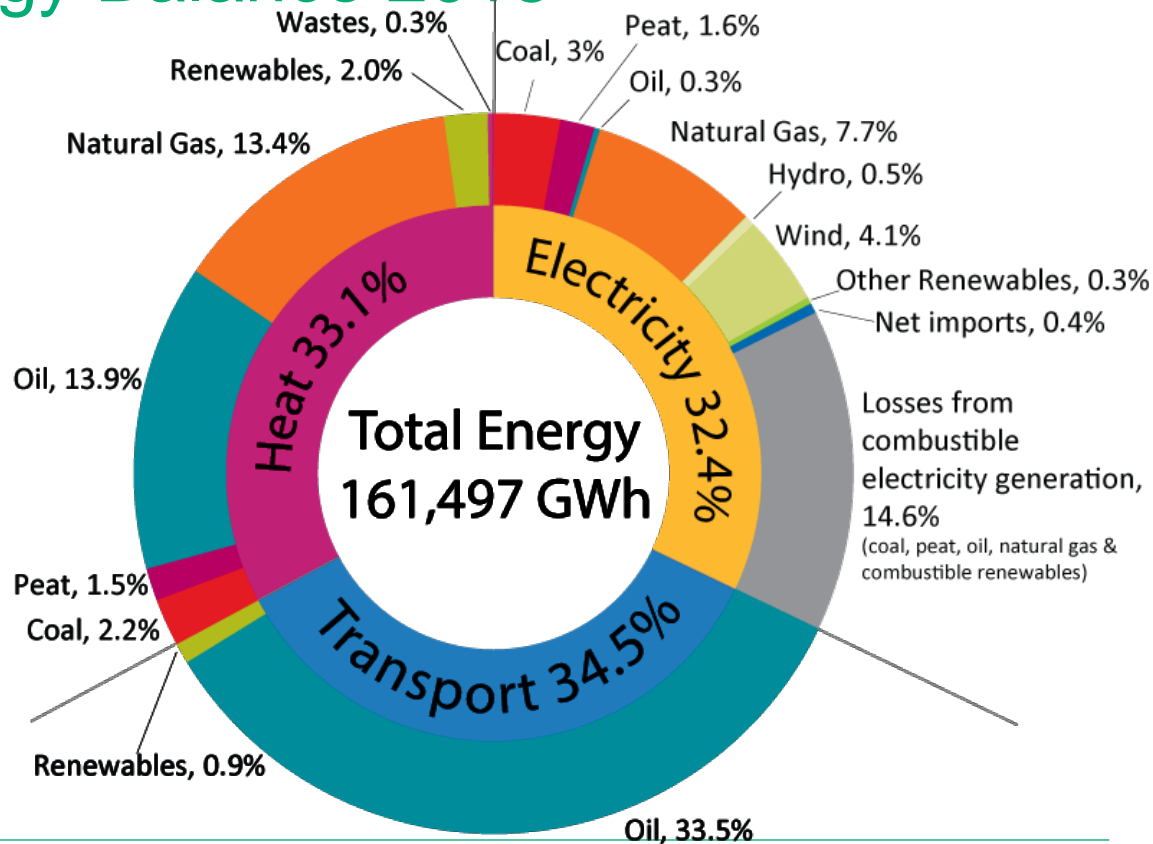
Energy in Ireland Report 2016



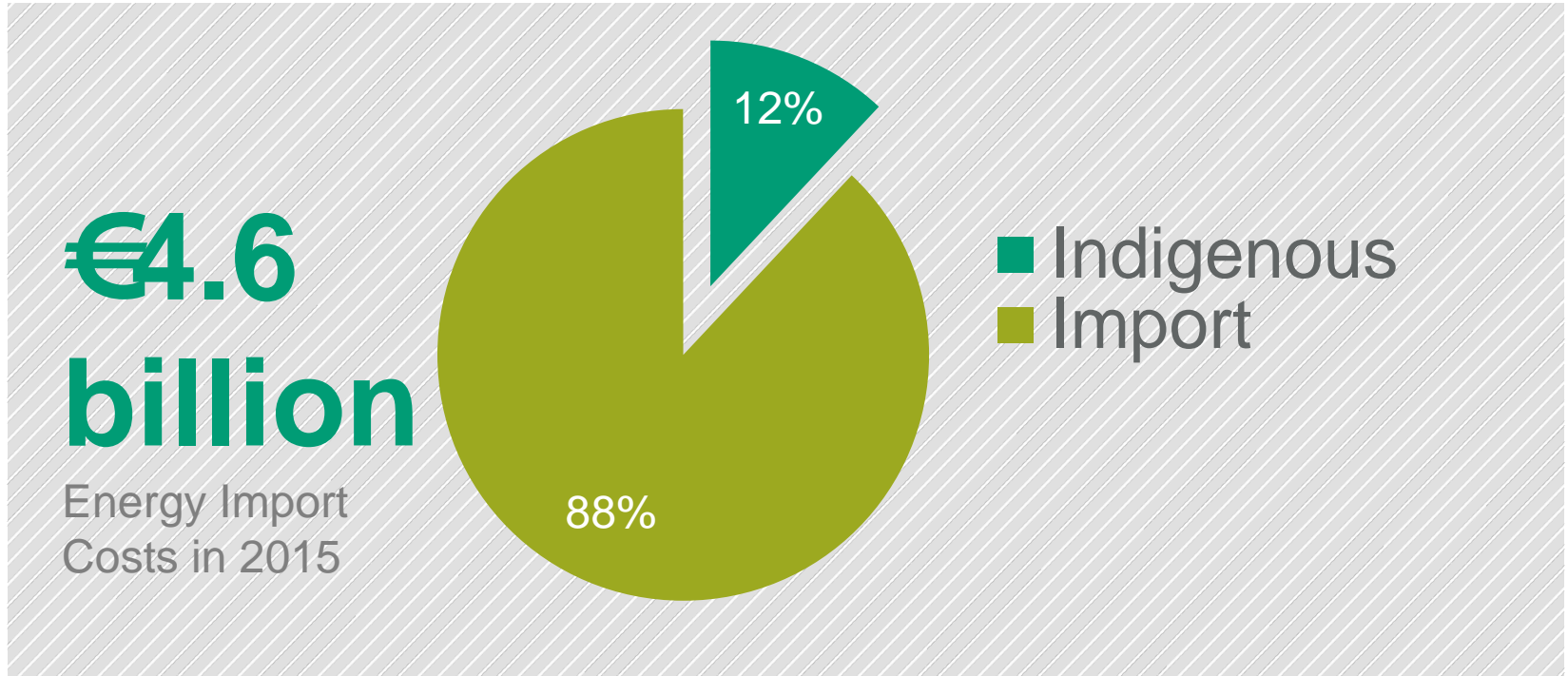
Key Trends in 2015



Energy Balance 2015



Import Dependency

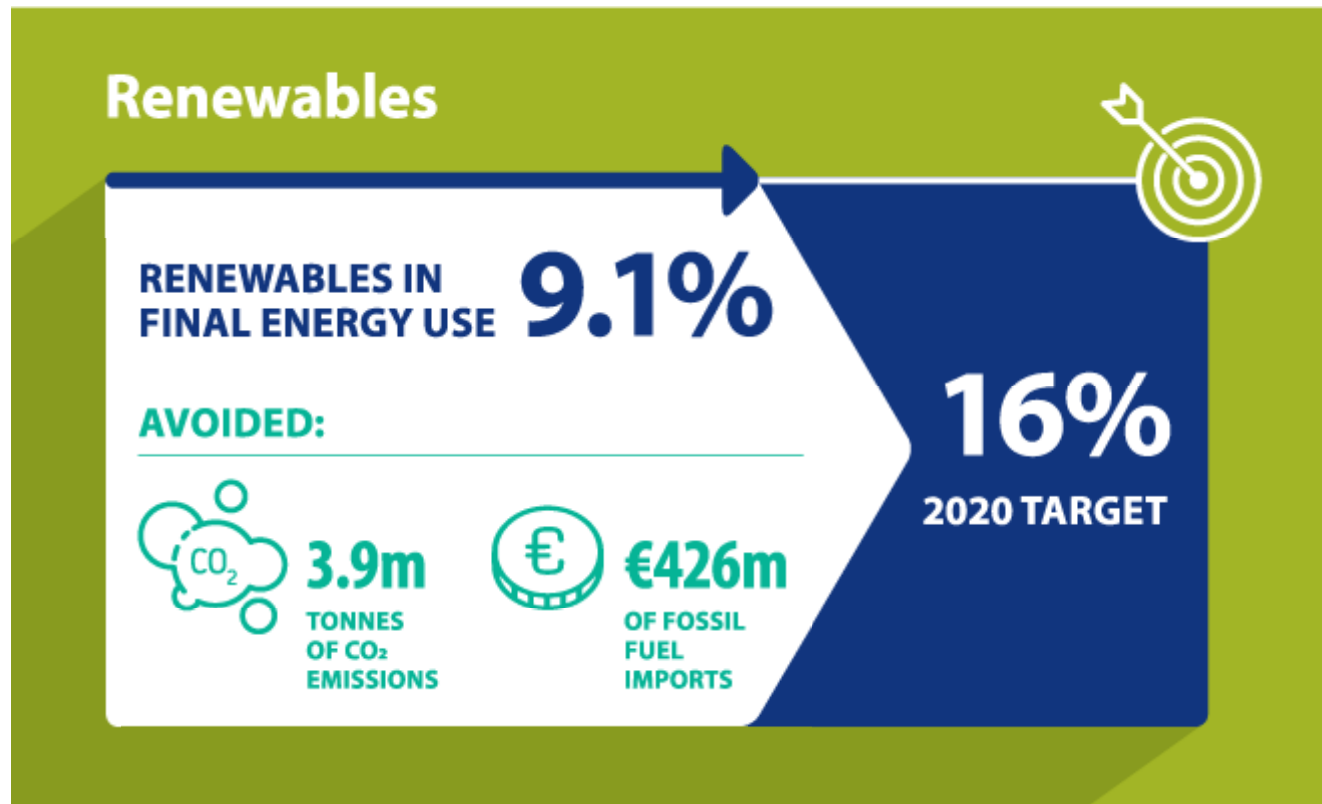


Progress towards renewable targets

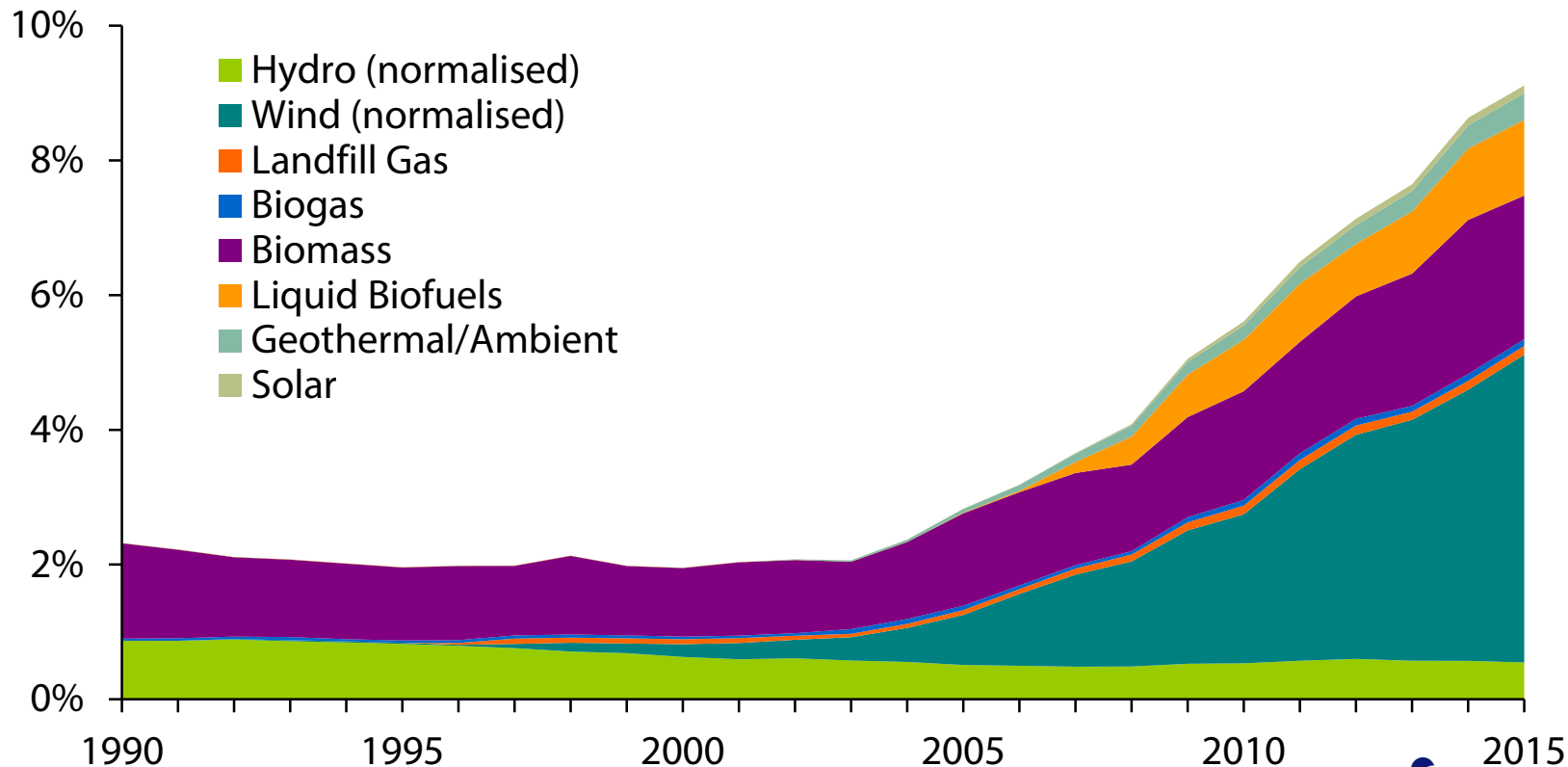
Energy in Ireland Report 2016



Renewable Target



Renewable Contribution to Gross Final Consumption



Progress towards renewable targets

25.3%

Electricity (normalised)

40%

2020 Target

6.5%

Heat

12%

2020 Target

5.7%

Transport

10%

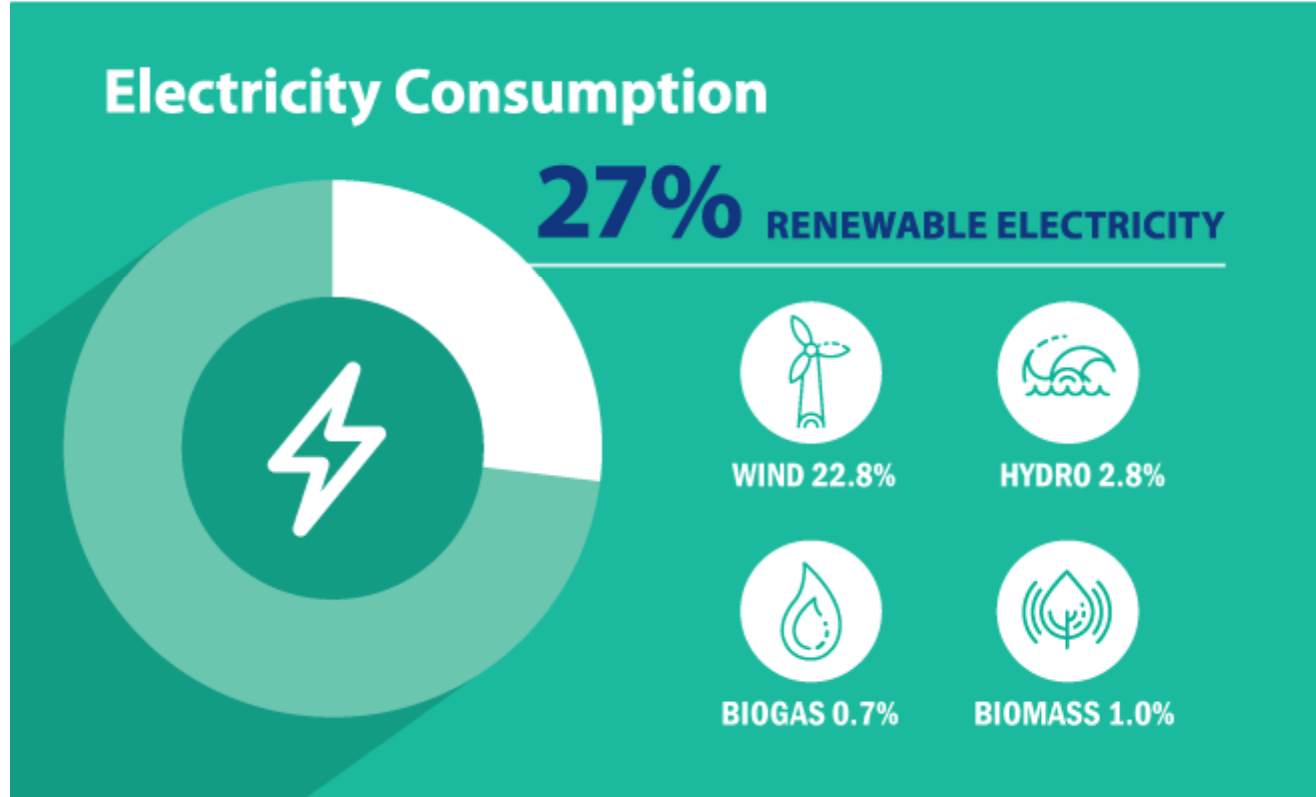
2020 Target

Electricity Generation

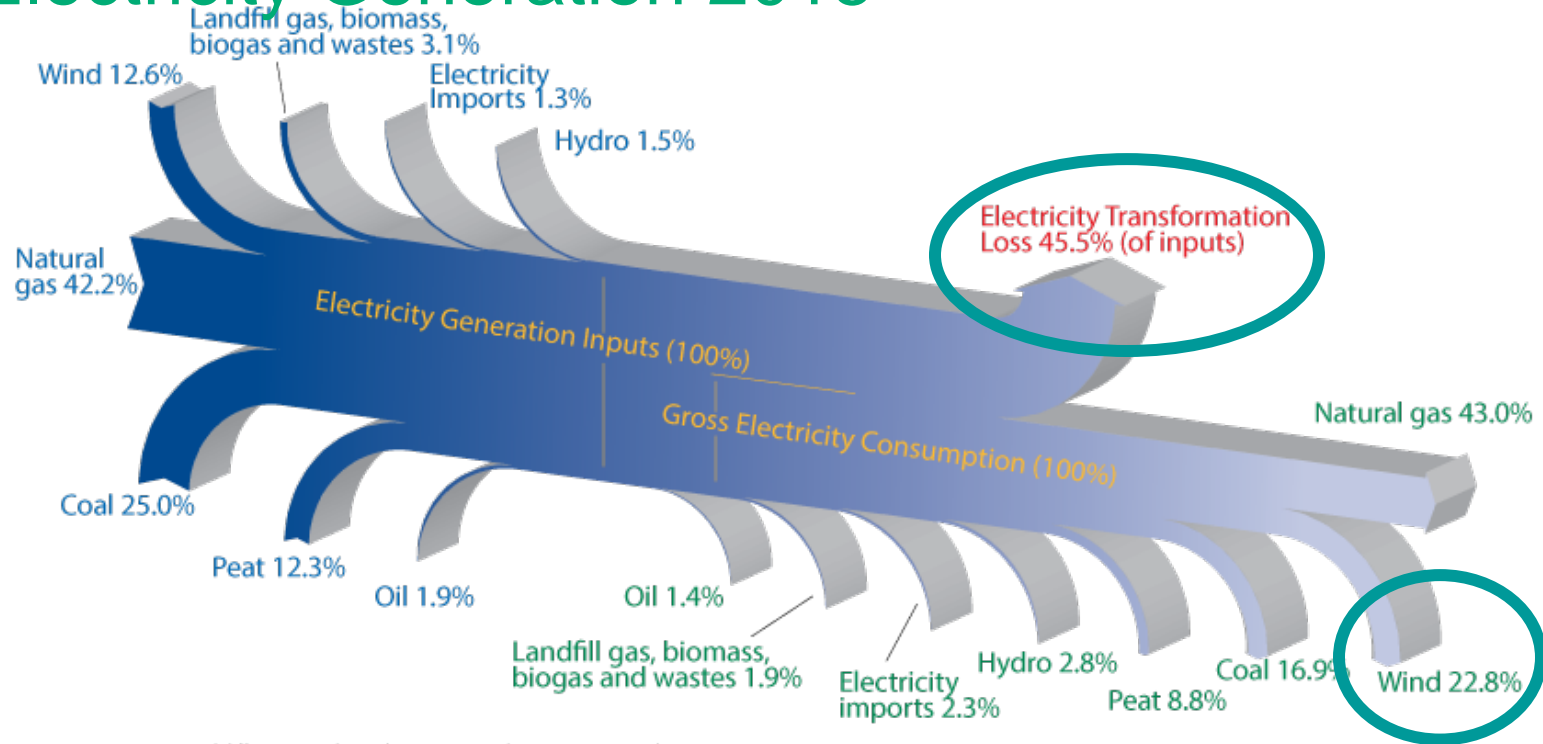
Energy in Ireland Report 2015



Renewable Energy Sources – Electricity 2015



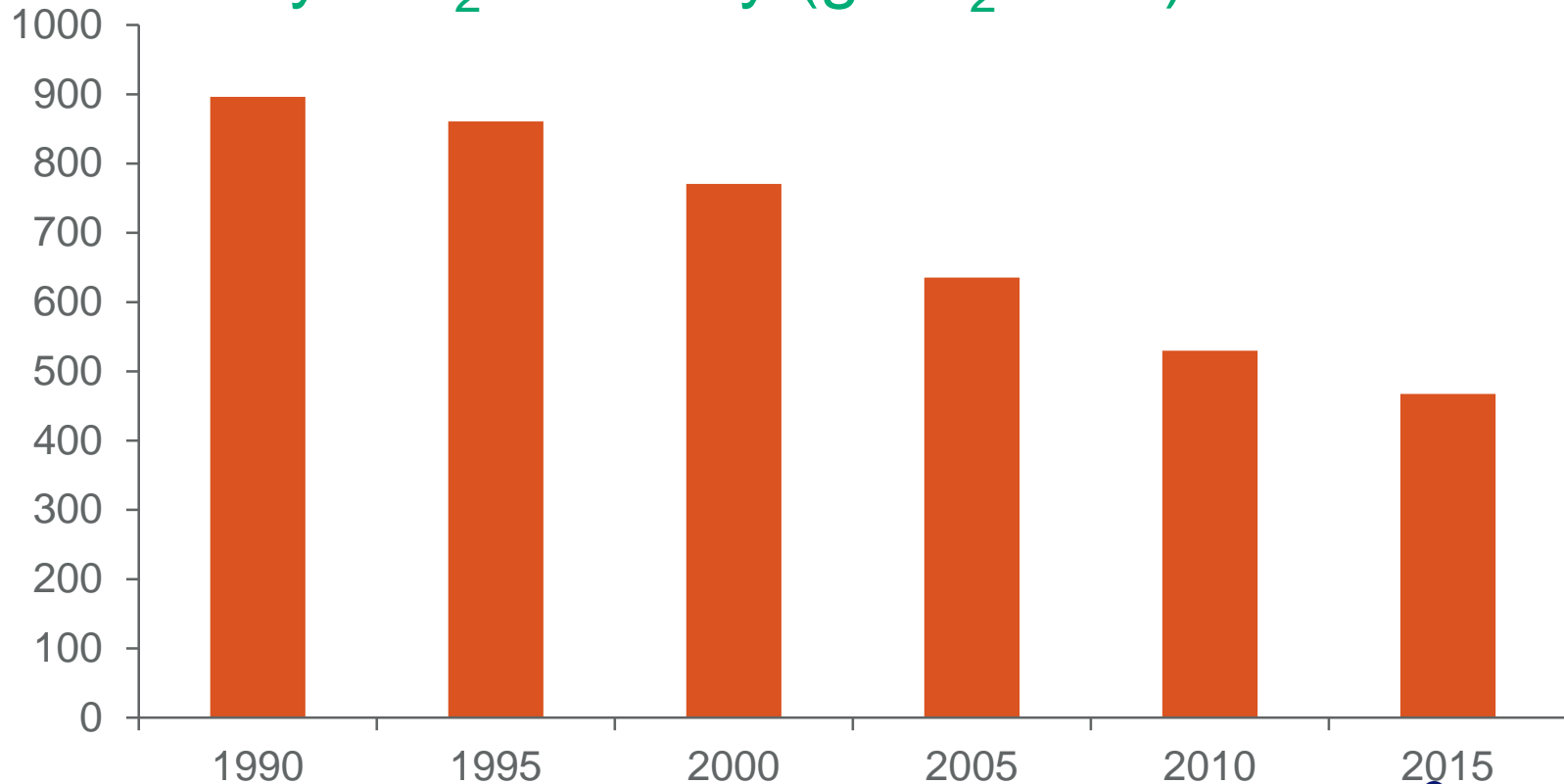
Electricity Generation 2015



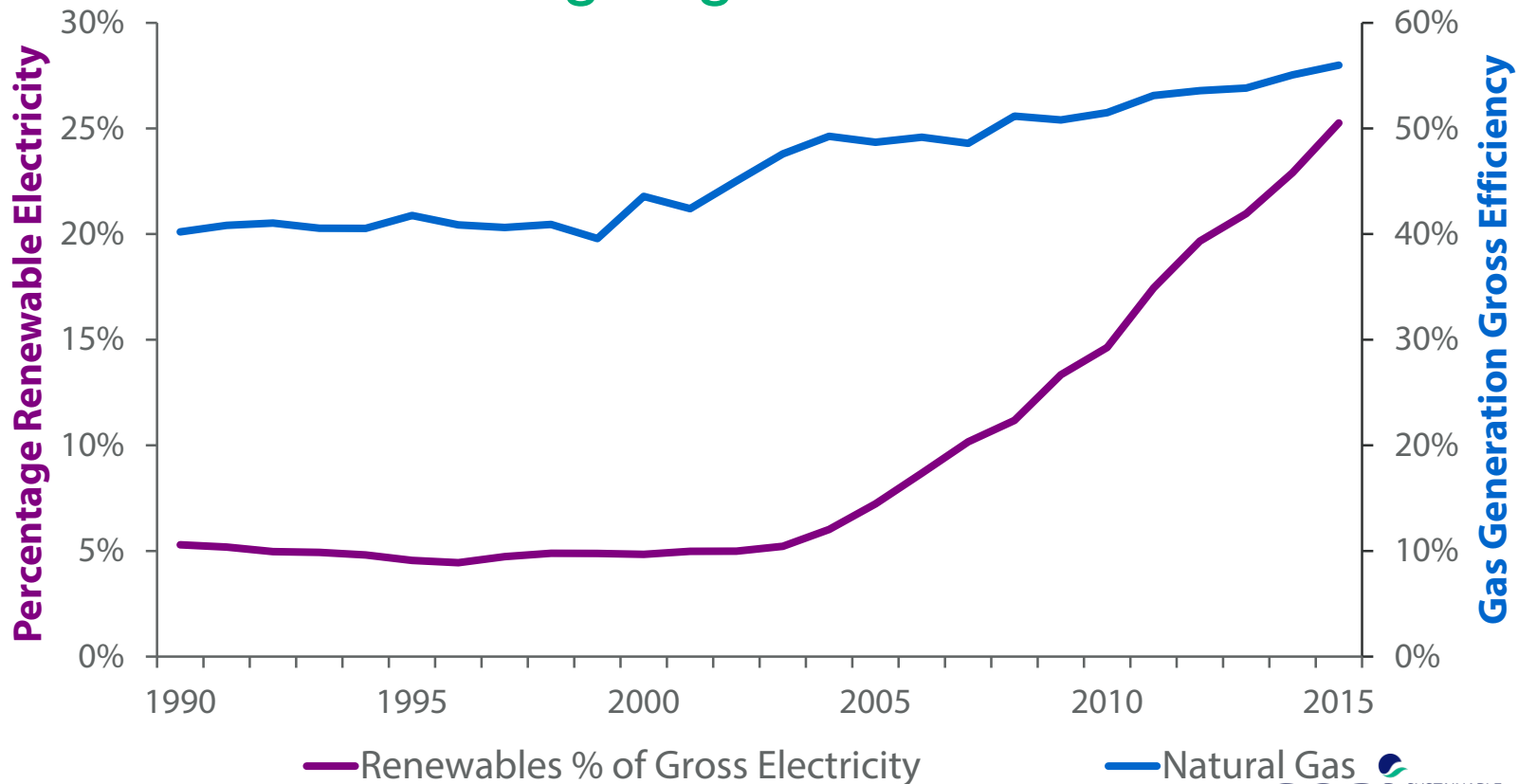
Note: Some statistical differences and rounding errors exist between inputs and outputs. Percentages of inputs on the left refer to percentages of total inputs. Percentages of output, with the exception of electricity transformation loss, refer to percentages of gross electricity generated.

Renewables as % of gross electricity consumption = 27.3%
 Renewables as % of gross electricity consumption (normalised) = 25.3%
 CHP as % of total electricity generation = 7.5%

Electricity CO₂ Intensity (gCO₂/kWh)



Renewables and gas generation

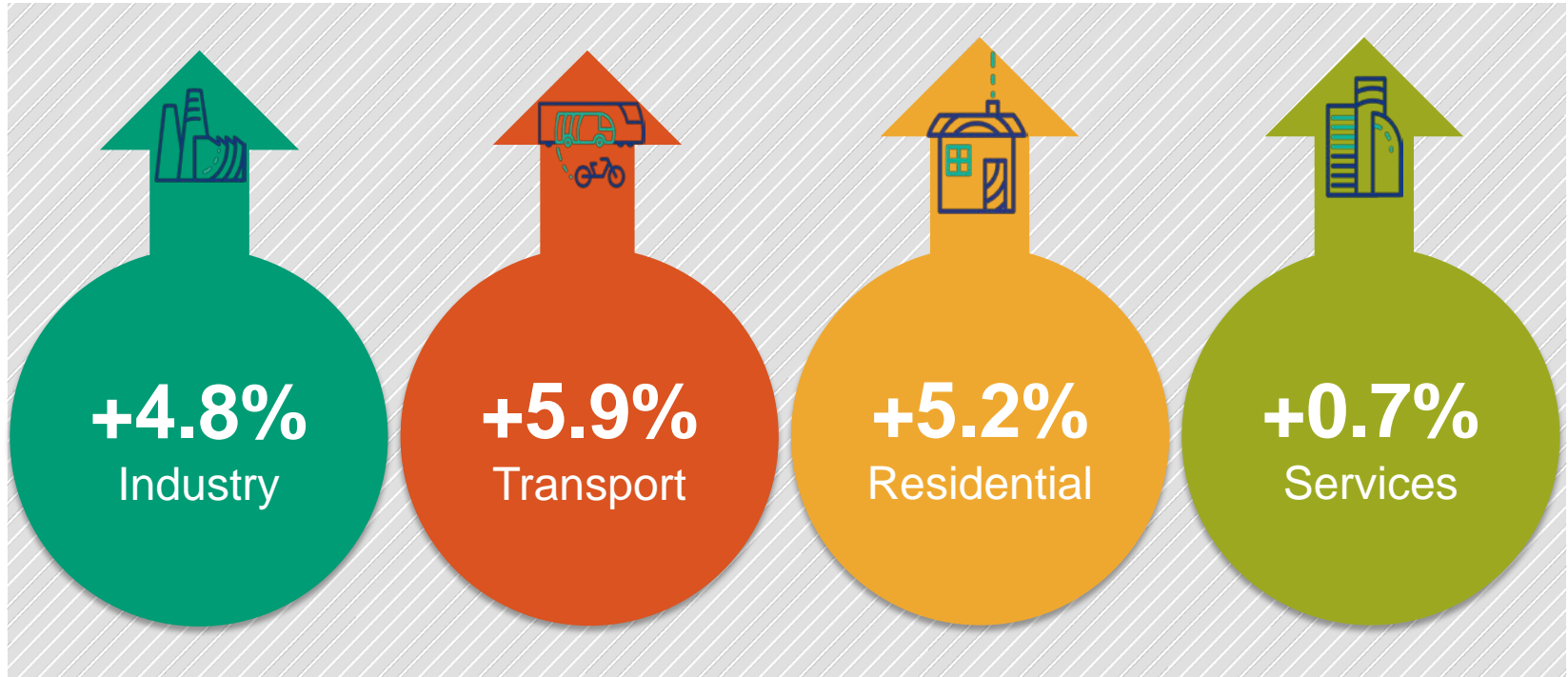


Sectoral Trends

Energy in Ireland Report 2015



Sectoral Energy use change in 2015

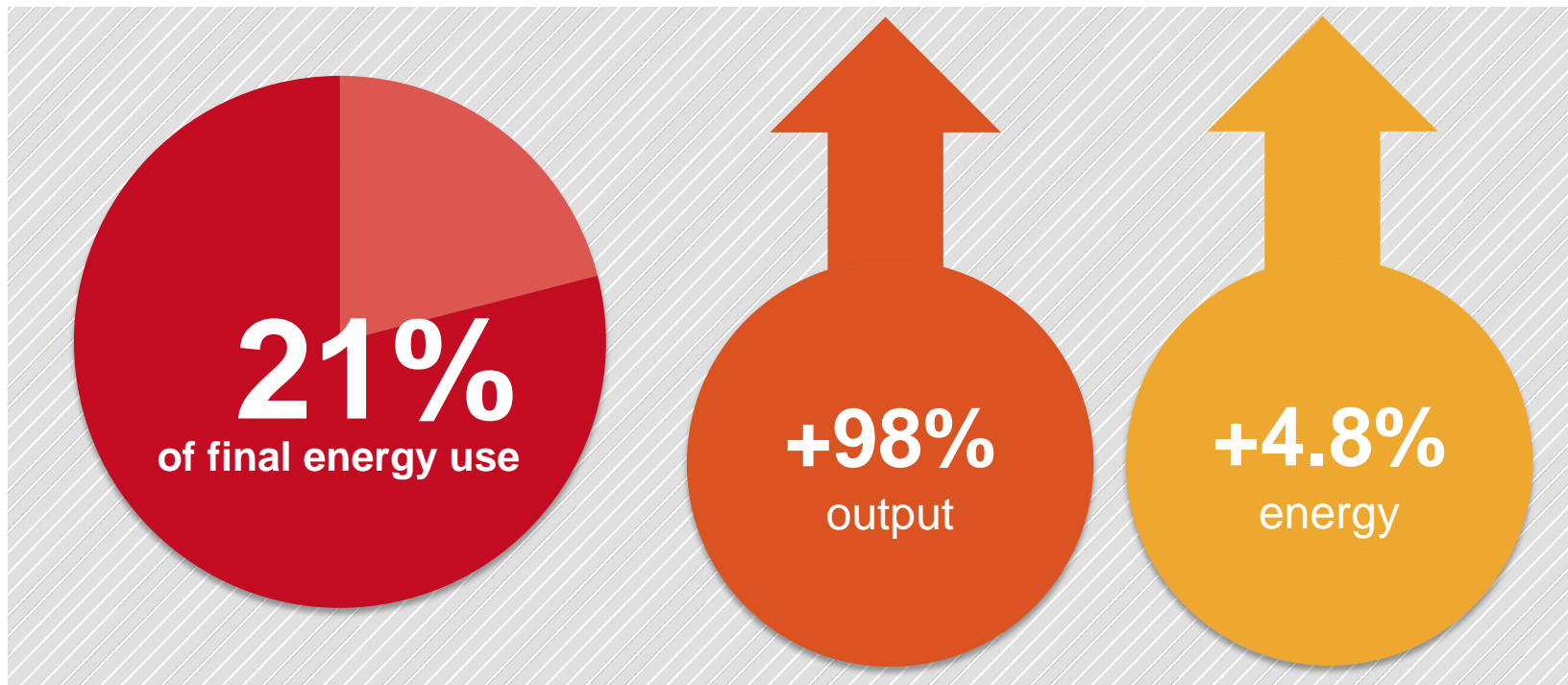


Sectoral Trends -

Industry

Energy in Ireland Report 2015

Industry 2015

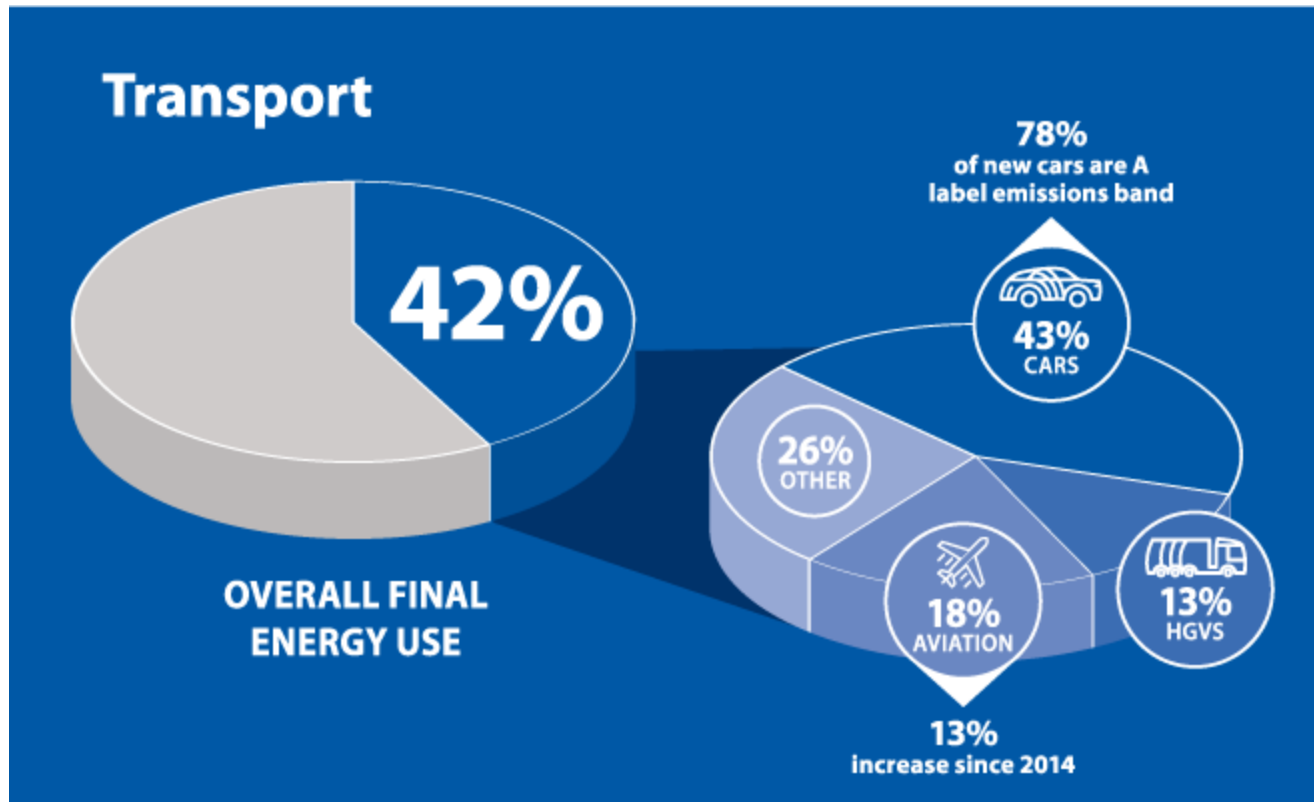


Sectoral Trends -

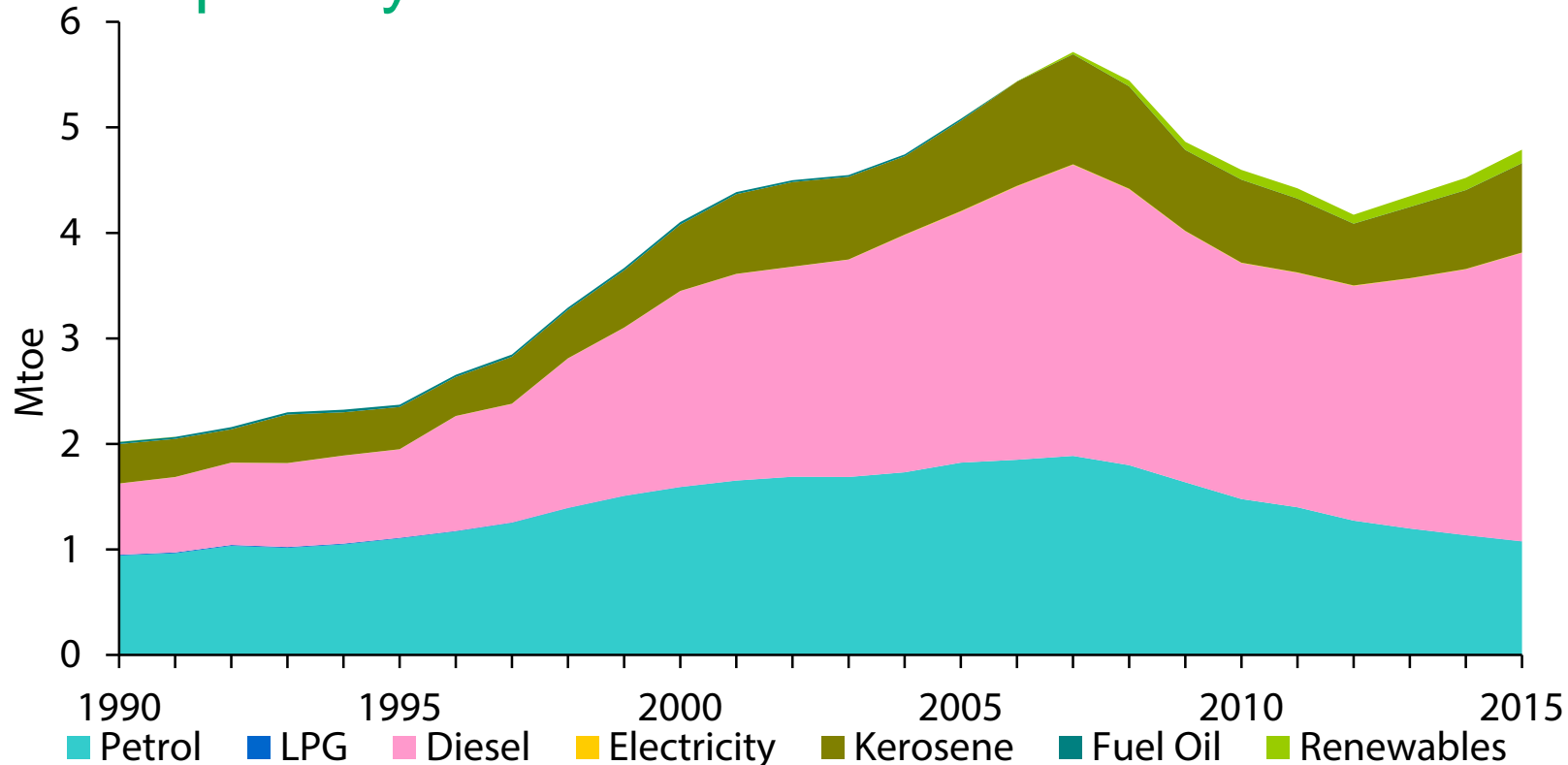
Transport

Energy in Ireland Report 2015

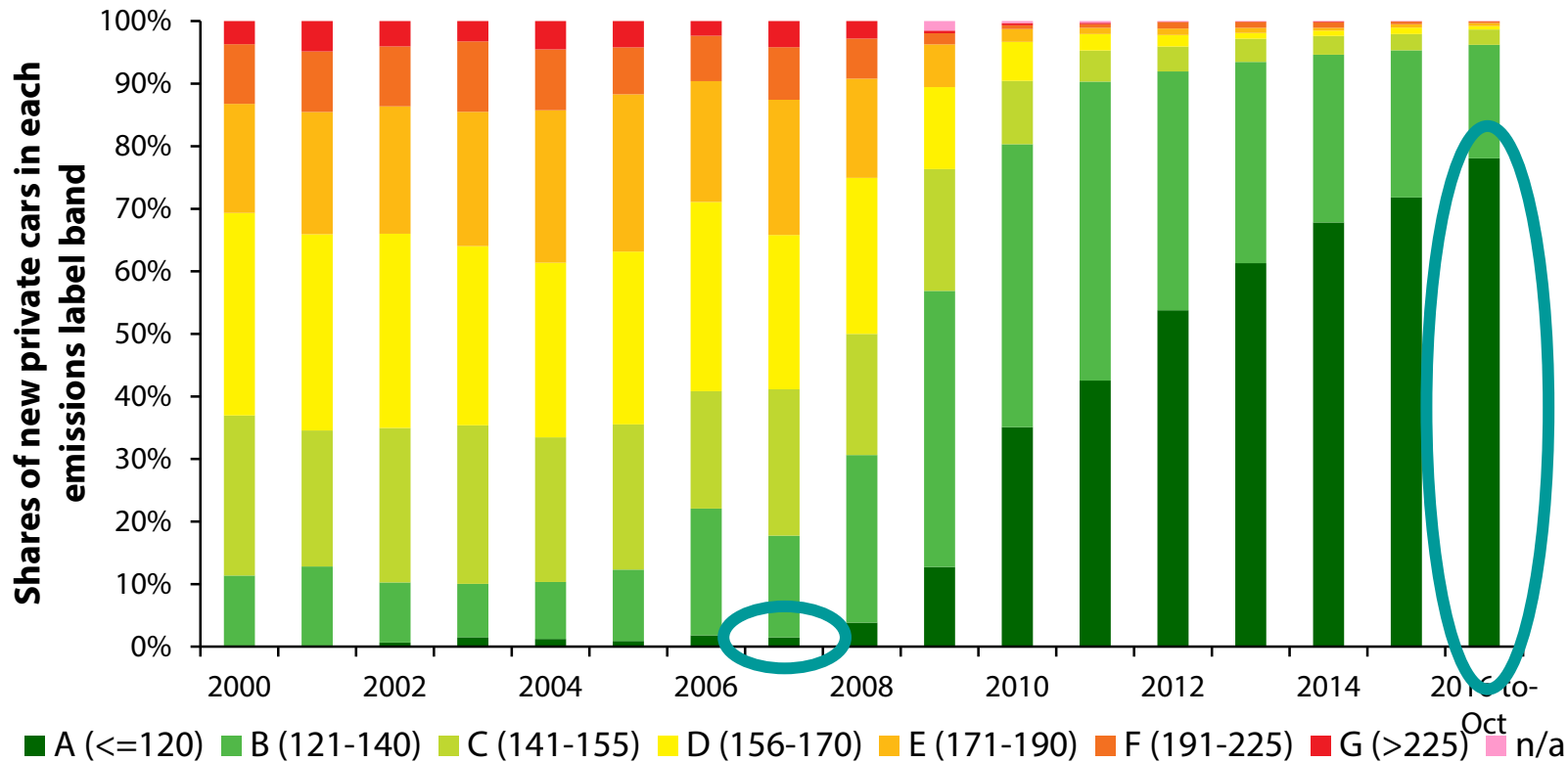
Transport Energy



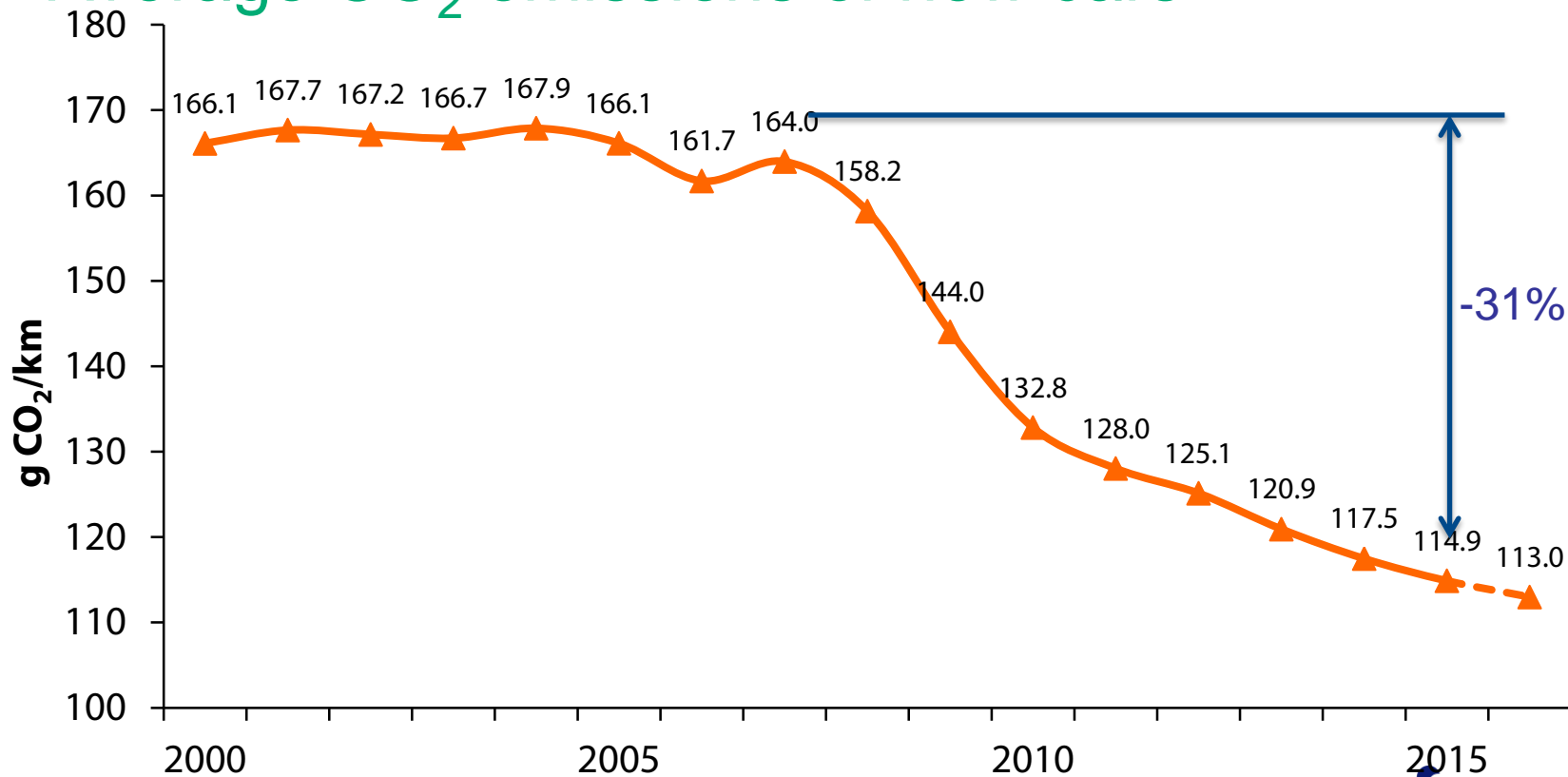
Transport by fuel



Share of new cars by emissions band



Average CO₂ emissions of new cars



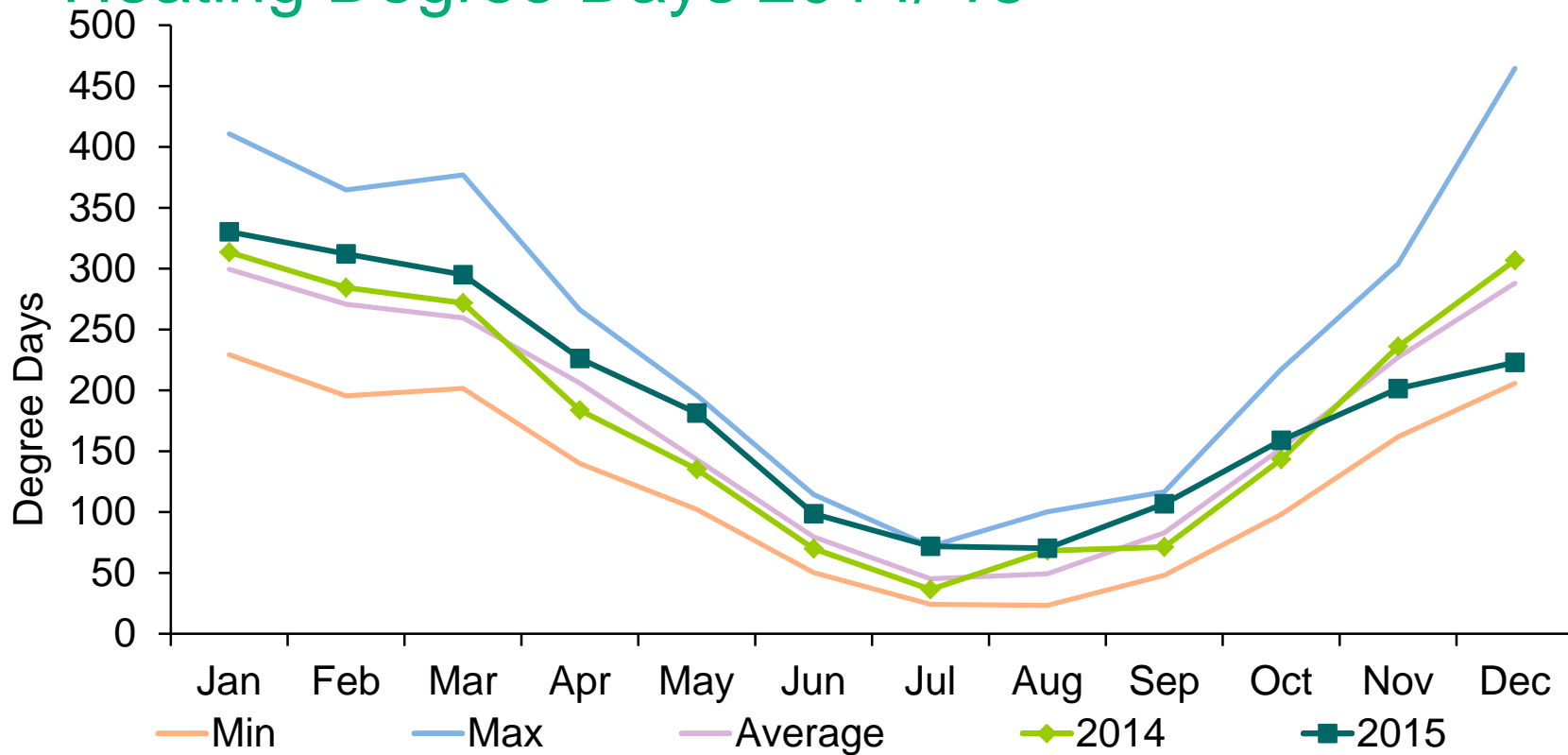
Sectoral Trends -

Residential

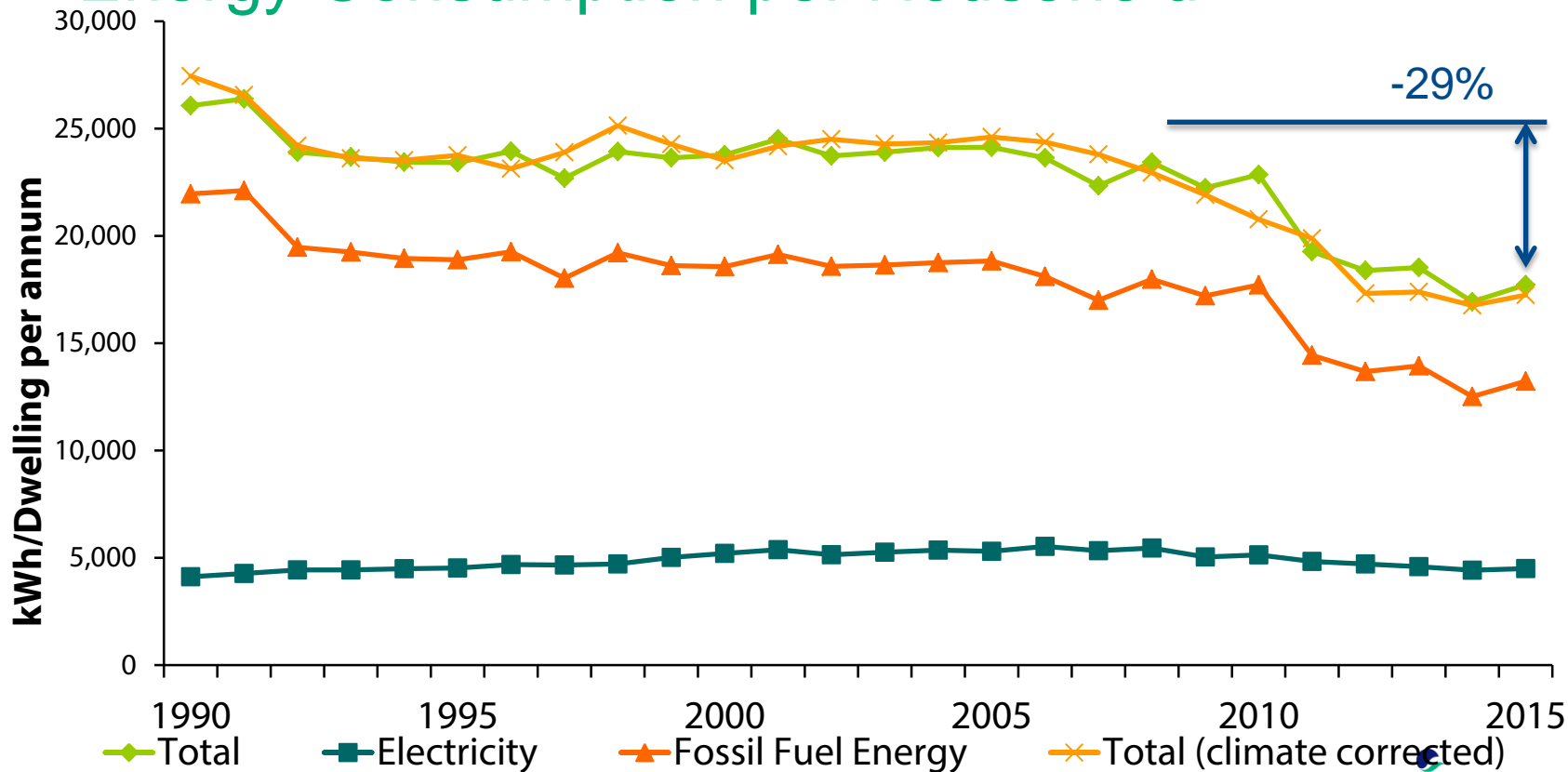
Energy in Ireland Report 2015



Heating Degree Days 2014/'15

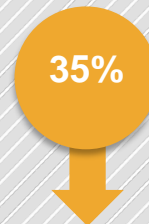
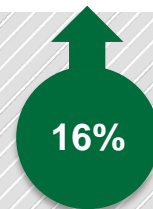
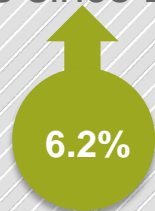


Energy Consumption per Household



Residential Sector Energy Consumption

- No. of permanently occupied dwellings since 2006
- Average floor area since 2006
- Residential energy since 2006 (weather corrected)
- Average household energy emissions
- Energy use per dwelling down by 29%

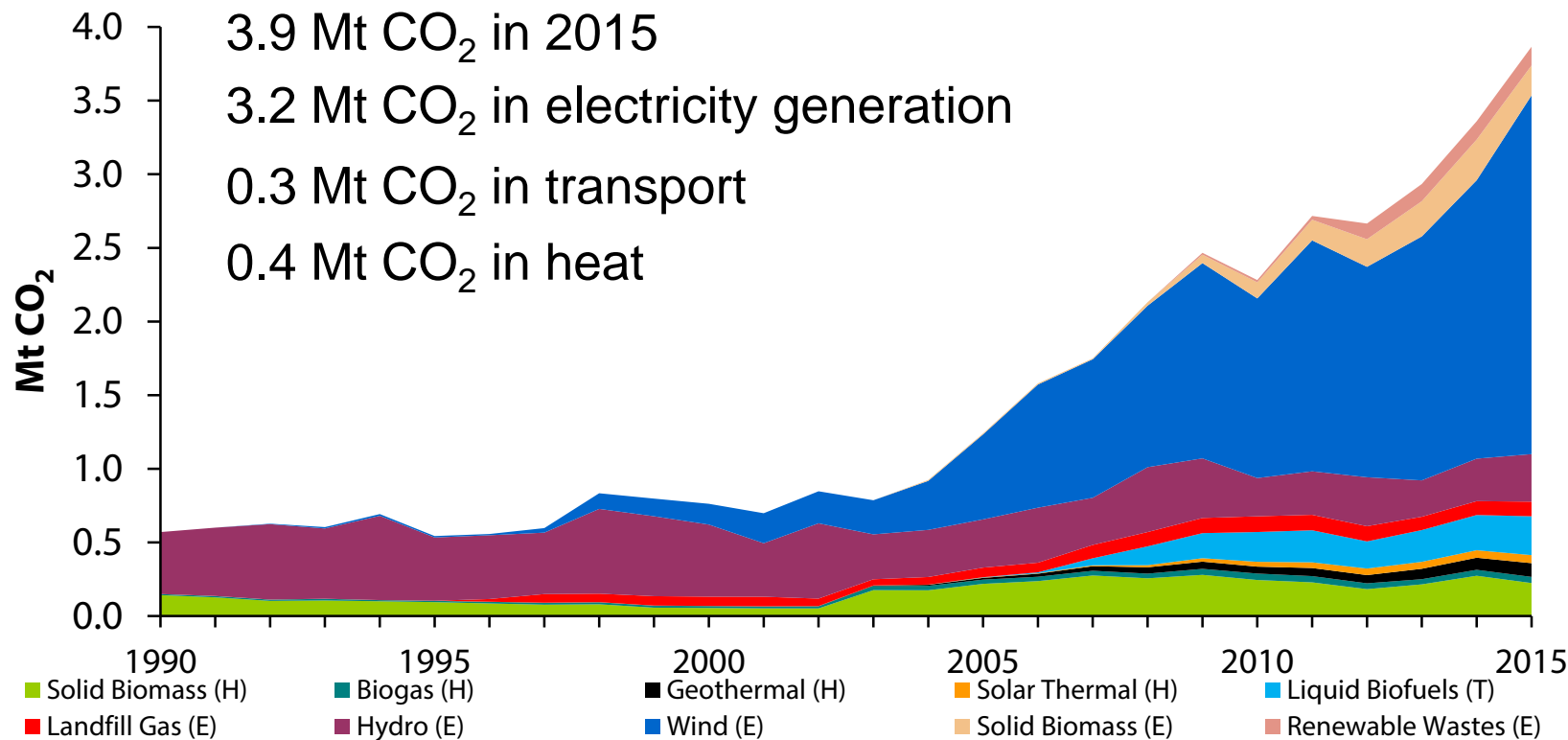


CO₂ Emissions avoided by Renewable Energy

Energy-related Emissions in Ireland



Avoided CO₂ from Renewable Energy



Summary

Energy in Ireland Report 2015

Summary 2015

- Energy use grew for the first time to any great extent since 2010.
 - Energy use increased by 4.9%
 - Energy-related CO₂ emissions increased by 5.8%



4.9%



5.8%

Summary 2015

- 9.1% Renewables to Gross Final Consumption
 - 25.3% Renewable Electricity
 - 5.7% Renewable Transport
 - 6.5% Renewable Heat

Thank You

<http://www.seai.ie/Energy-Data-Portal/Energy%20Data%20Publications/>



The Sustainable Energy Authority of Ireland is partly financed by Ireland's EU Structural Funds Programme co-funded by the Irish Government and the European Union.

