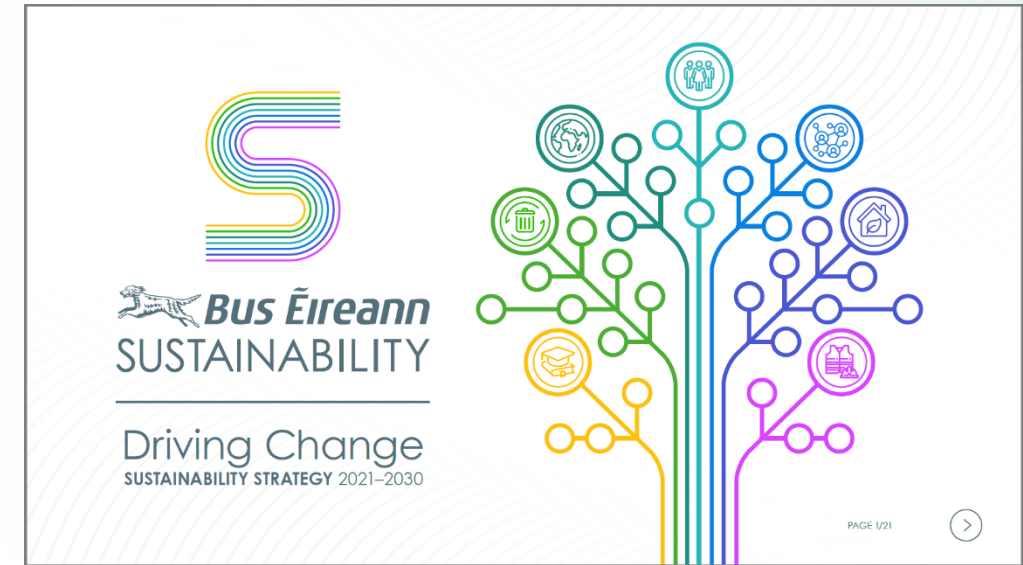


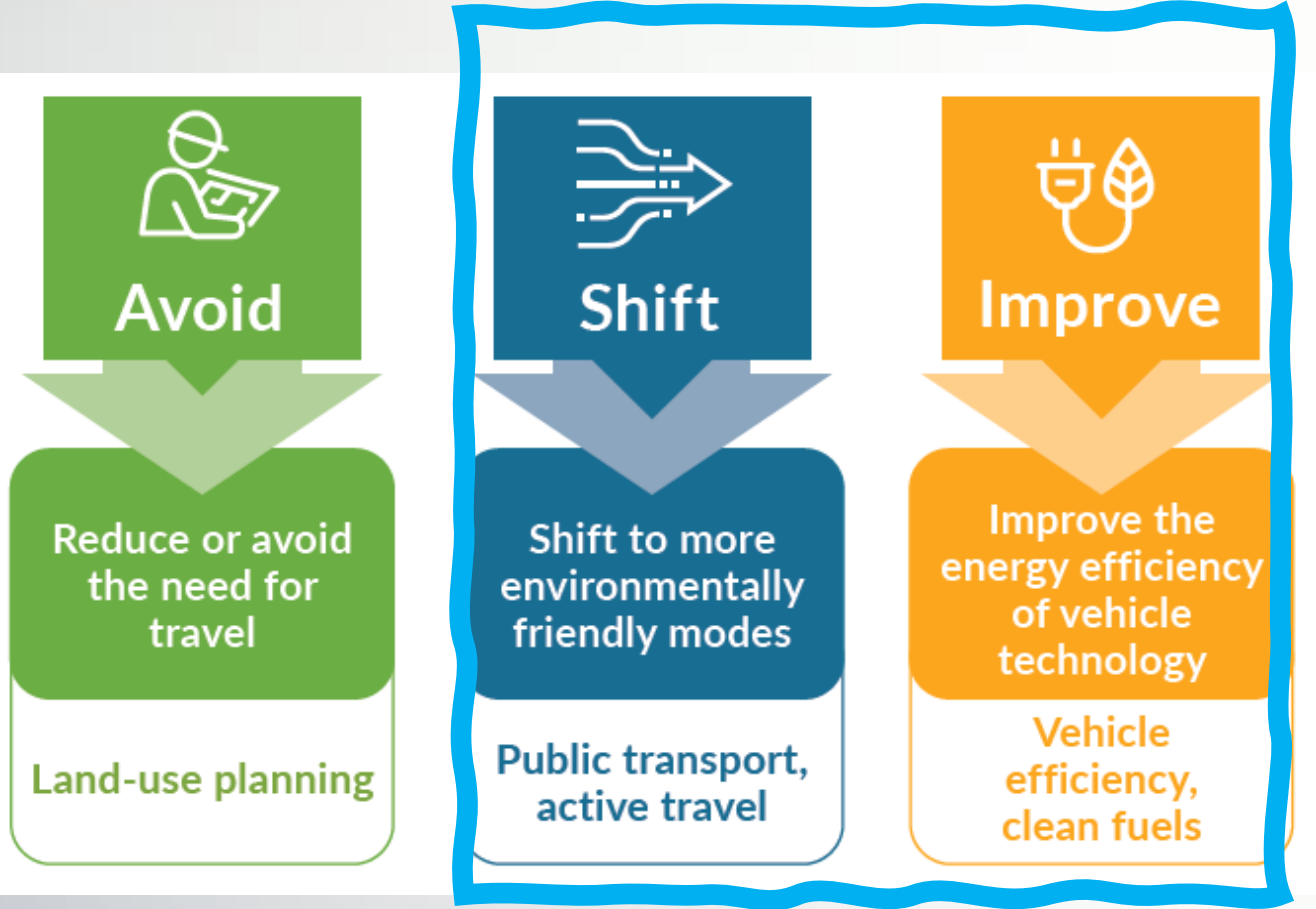


Organisation Summary:

- Bus Éireann is Ireland's national bus operator
- Operates more than 220 routes – Public Service and Expressway
- 7,000 dedicated school transport routes
- 2,800 employees
- Fleet of 1,100 vehicles
- 2019 – total 89 million passengers. Matching 2019 levels this year.
- 2021 launched first Sustainability Strategy *“Driving Change 2021-2030”*
 - Roadmap with key targets relating to Climate Action, Waste and Consumption, Equality and Education, Decent Safe Work, Cities and Communities and Partnerships
 - Aligned to the Climate Action Plan 2021
 - Aim to reduce our emissions by 50% & increase emission free fleet by 50% by 2030
 - Contribute significantly to modal shift and increase our passenger numbers by 30% against our 2019 baseline



National Sustainable Mobility Policy – The How



- Key focus for Bus Éireann:

- **Shift** – more customers using public transport
- **Improve** – transition to Zero emission fleet





National View:

- Fleet = 96% of energy consumption and emissions
 - Since 2020, 20% of fleet replaced with Low or Zero emissions vehicles – Euro 6, Hybrid and Hydrogen Fuel Cell EV
 - City and town fleets to transition to EV:
 - Athlone, 2022
 - Limerick, 2023
 - Cork, 2024
 - Galway, 2025
- Other regional cities and towns in initial project planning phase



Opportunities:

- Ireland Inc. transport sector emissions targets
- Passenger growth, nationwide modal shift and culture change amongst public
- Positive impact on economy, community, neighbourhoods

Challenges:

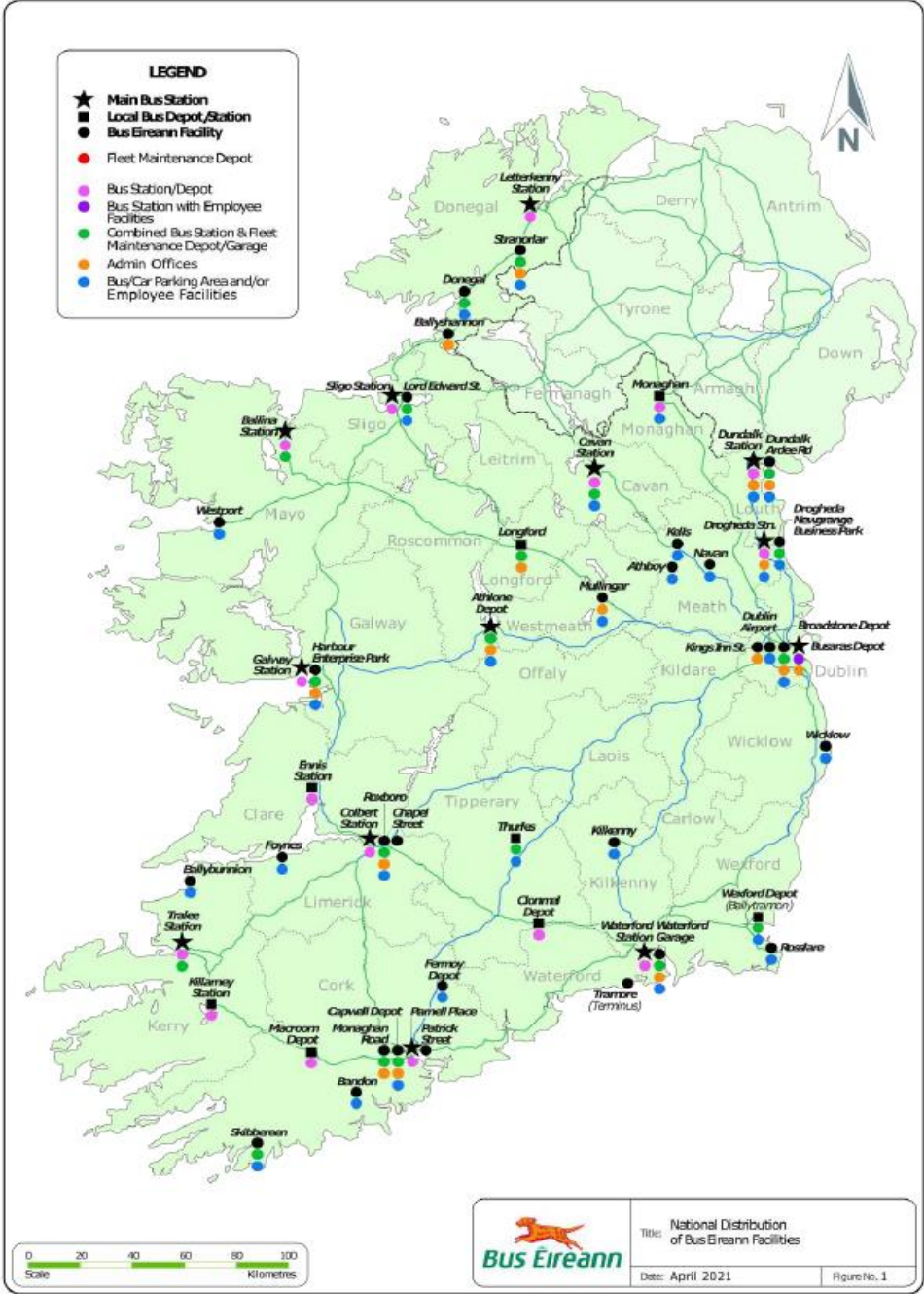
- Getting required power to sites in lead times available
- CAPEX
- Planning process
- Coach solution



Depot transition – aligned to fleet transition

- **Phase 1 transition** – urban bus fleet (30% of fleet)
- **Phase 2 transition** – coach fleet (70% of fleet)

Depots (17)	Phase 1 ('22-'26)	Phase 2 ('26-'32)	Schools only depot
Athlone	X	X	
Ballina		X	
Broadstone	X	X	
Cavan		X	
Cork Capwell	X	X	
Cork Second Depot		X	
Drogheda	X	X	
Dundalk	X	X	
Galway	X	X	
Limerick	X	X	
Longford		X	Yes
Monaghan		X	
Skibbereen		X	Yes
Sligo	X	X	
Stranorlar		X	
Thurles		X	Yes
Tralee		X	
Waterford	X	X	



Cork View:

- Bus Depot at Capwell –
at capacity, largest fleet location (216 vehicles), 626 employees, contribute €40M to local economy
- NTA Bus Connects Programme – Fleet and network expansion, BÉ hope to deliver bulk of this in partnership
- Transition of Cork city fleet to low and zero emissions vehicles

Opportunities:

- Network expansion and product offering to customers
- Enable modal shift and city decongestion
- Improved air quality, noise reduction, quality of life for population
- Healthier and safer workplaces with infrastructure upgrades
- Upskilling staff

Challenges:

- Network redesign, road space, public resistance
- Resources and recruitment
- Expansion to 2nd site
- Delivery of required power to Capwell





Other Initiatives:

In 2021:

- Galway 100% and Limerick 50% hybrid city fleet ~ 25% fuel savings
- Hydrogen Fuel Cell EV Bus pilot since July 2021
- >240,000 Kms emissions free, > 90 TCO2e reduction

Present & Future:

- Our Property portfolio:
 - New builds, NZEB standard – Limerick Depot, Limerick Bus Station, Galway Bus Station
 - Shallow and deep retrofits nationwide – e.g. building fabric, LED's, heating systems
 - Solar PV installations
 - ISO14001 & 50001 certification expansion
 - Water audits
 - Energy audits
 - Biodiversity projects – e.g. gardens, swift boxes
- Hydrotreated Vegetable Oil (HVO) trial in 2023
- Telematics behavioural study in 2023

